

North American Railroad Map - Quick Start

Installation

Place the CD in your CD-ROM Drive. The install program should start automatically. If it does not, from the Windows Start menu, choose Run, select Browse, then your CD drive. Then highlight rmap3_setup.exe and choose OK to start the Install program. Follow the on-screen directions.

Viewing the Map

Railroads are displayed as black lines on the map. The thicker lines represent segments that have heavy traffic. Dotted gray lines represent lines, which have been recently abandoned. To pan the map, place your mouse cursor on the map and move it while holding down the left mouse button. To zoom in or out click on one of the Zoom buttons:



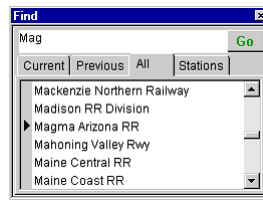
Zoom an area

Place the mouse pointer on the map, hold down the right mouse button and drag the cursor to the right and down to draw a box around the area that you want to zoom in on.

View Railroads



Click on the Find Button to display the Find Panel, which includes three lists of railroads. The list can be selected by clicking on the tab above the list. "Current" includes currently operating railroads. "Previous" lists railroad companies that no longer exist, but once operated trackage, which appears on the map. "All" is a combination of both lists.



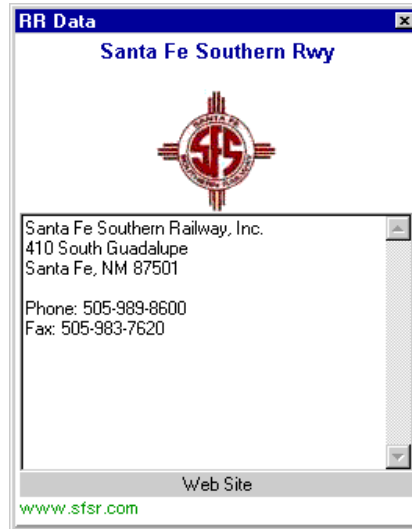
Select a railroad by scrolling the list to the railroad you are seeking and then double-clicking on its name or by clicking the "Go" button. The trackage operated by that railroad will be shown in red on the map. The default colors and line styles for selected railroads can be customized (see [Changing Line Styles/Colors](#)).

To display multiple railroads, hold down the **Ctrl** key as you make selections from the list.

Clicking on the Deselect Railroad button  will change the track colors back to black.

Railroad Data

Clicking on the Track Info button toggles the Railroad Data Panel. This panel can be repositioned and resized. Clicking the left mouse button on a track segment, or selecting a railroad from the Find Railroad Panel, will display information about the railroad company in the Railroad Data Panel.




Track Segment Information

Clicking on the Track Info button toggles the Segment Info Panel. This panel can be repositioned and resized. As you move the mouse pointer cross hair across the map, information about the track segment under it will be displayed in the Track Info Panel.

- Previous Operator
- Operator during the Post World War 2 era
- Abandonment Date
- Current Passenger Use if any
- Traffic Density
- FRA classification
- Signaling type
- Approximate length in miles

Note: The data does not include traffic, FRA classification or signaling for areas outside of the United States of America

Map Legend

The Legend button  toggles the Legend Panel. This displays the color code for selected railroads (see Change Line Styles/Colors).



Change Line Styles and Colors

Use the Options -> Line Styles & Colors submenu to change the color, line width and style of railroad lines.



To change a color, click on a panel in the "Color" column. Line width and style (Solid, dot, dash, clear, etc.) can also be modified.

This feature can be used to hide railroads by setting the line style to "psClear". For example, if you did not want abandoned railroads to be visible, you could set the "Abandoned RR Style" to psClear. Also, by setting the "Railroad" and "Abandoned RR" styles to psClear and then selecting a particular railroad, only that railroad and its trackage rights would be visible.

Aerial Photos and Topo Maps Online



To see an aerial photograph or topographic map of the region that you are viewing with the map, click on the Aerial Images button. Select from one of the following options:

- Microsoft Terraserver USA Aerial Photograph
- Microsoft Terraserver USA Topographic Map
- TopoZone.com Topographic Map
- Google Maps Satellite Image
- Google Maps Map Image
- Google Maps combined Map/Satellite

Click OK to start up your default Internet Browser and your Internet connection. Once a connection to your Internet service provider has been established, it will take you to the selected web site and display an aerial photograph or topographic map for the area that you are viewing.

View Railroad Groups

Selecting **View** from the menu includes options for highlighting:

- All Class 1 railroads
- All Class 2 railroads
- All Class 3 railroads
- Amtrak Routes
- VIA Rail Routes
- Tourist Railroads



Class 1 Railroads

Find Station



Click on the Station Button to open the Search Station Panel

Station	Junction	ZipCode	SPLC
Huntsman, NE	HUNNE	69162	550944
Huntsville, AL	HUNTS	35801	471340
Huntsville, NJ	7821	190258	

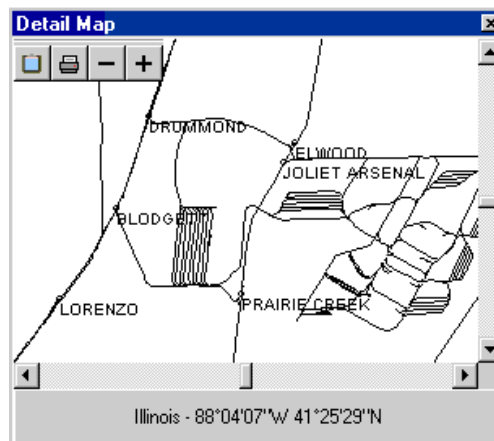
You can search for a station by name, zip code, junction code or Standard Point Location Code (SPLC). Select the search type and enter the name, number of code in the edit box. The list box will automatically scroll to the nearest match as you enter the search text. Click on the Go button and the map will zoom to the current station. Clicking on the Track Info button toggles the Segment Info Panel. This panel can be repositioned and resized.

Font styles, colors and size for station names can be changed by selecting Options-> Fonts from the menu. Station titles can be toggled on/off by double-clicking on the station location. This can be useful in situations where the station titles become too crowded.

Detail Map




Clicking on the Detail button toggles the Detail Map Panel. This panel can be repositioned and resized. The Detail Map Panel shows a higher resolution map, including some sidings and yard trackage. This map is based on USGS 1:100,000 scale data and is not available for Canada and Mexico.

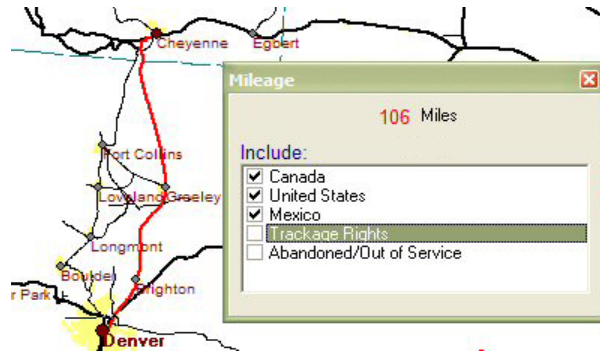


Railroad Segment Mileage

If the [Railroad Information Panel](#) is displayed, the length of a railroad segment will be displayed in the panel.

Calculating route length

Click on the mileage button  to display the **Mileage panel**. Hold down the **Ctrl** key and select railroad segment(s) with the left mouse button. The total length will be displayed at the top of the panel (in miles).



Calculating total mileage of railroad(s) or groups

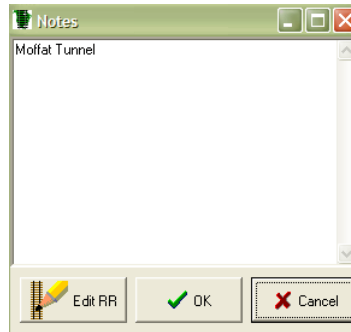
Click on the mileage button to display the **Mileage panel**. The approximate total mileage for a railroad can be calculated by selecting a railroad. By selecting multiple railroads, their combined mileage is calculated. Also, selecting a group from the menu (for example View-> Class 1 Railroads) will calculate the approximate total mileage for that group (see [Railroad Groups](#)).

The Mileage panel also allows you to include or exclude countries, trackage rights and abandoned/out of service trackage by selecting the appropriate check box.

Important: Due to variations in source, simplification of junctions and rounding errors, mileage calculations should be considered approximate.

Edit Railroad Segment (Advanced)

Important: It is highly recommended that you create a backup of all data files in the Railroad Map folder before making changes. The data files consist of files with .dat, .idx and .blb file extensions. Double clicking on a railroad segment will display a panel that allows you to include text notes for that segment.



At the bottom of the **Notes panel**, there is a button for **Edit RR**. Clicking this button will display the **Edit Rail Data** panel.



The **Edit Rail Data** panel has three buttons for changing or setting the railroad segment owner and up to two joint owners and buttons for changing or setting up to seven railroads with trackage rights. Clicking one of the **Change...** buttons will allow you to select a railroad from a list or add a new railroad.

When adding a railroad, you will be prompted to enter a Railroad Name and Reporting Mark (4-letter maximum). If the name or reporting mark duplicates one that is already in use, the new entry will not be accepted.

Disclaimer

All information in this product is subject to change without notice. Railway Station Productions, LLC makes no representation that the information in this product is absolutely accurate or complete. Railway Station Productions, LLC does not assume and hereby disclaims any liability to any party for any loss, damage caused by errors, omissions or inaccuracies in the product, whether such errors, omissions or inaccuracies result from negligence, accident, or any other cause.

Warning. Do not trespass on railroad lines or property or interfere with railroad equipment or commit any act, which might endanger the safe operation of the railroad.

Railway Station Productions, LLC is not associated in any way shape or form with any railroad company.

Some features of *North American Railroad Map* link to external internet web sites. Railway Station Productions, LLC is not responsible for the content or availability of any external sites.

Trademarks are the property of their respective owners

Copyright © 1999-2007 Railway Station Productions, LLC

Email: stationmaster@railwaystation.com

Website: <http://www.railroadmap.com>